



EnvokeIT ScriptWindow

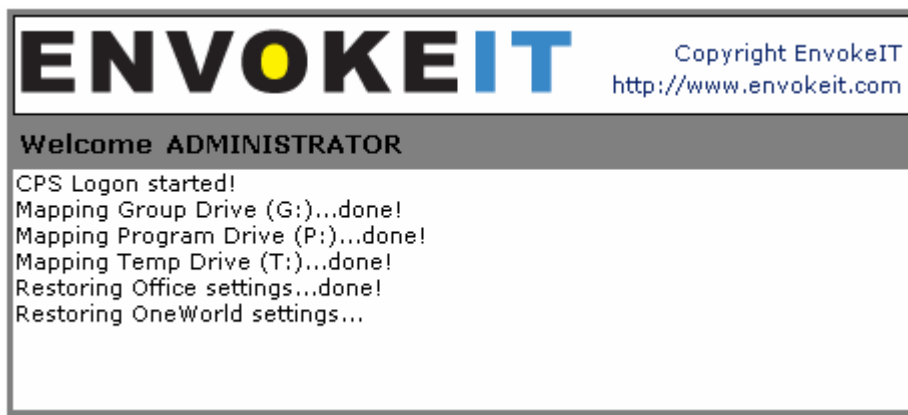


Introduction

EnvokeIT ScriptWindow is the perfect utility for you that you can use in scripts to show the actions performed in the background to the end user. Some actions might take time and the script might seem slow or hung! But with the *EnvokeIT ScriptWindow* utility the user sees a "progress" display window that clearly shows what is being done.

Stop confusing your users with blank screens and let them know that the service they are using isn't hung and that it's actually performing tasks.

Below is an example of how the *Standard Edition* progress window might look like;



The *Advanced Edition* makes the configuration of the window appearance simple from the script that starts it by using the ScriptWindow objects' properties and methods.

You can easily change these properties in the window by setting properties in the script;

- Company logo and its background color
- background color (that is gray in the above example)
- "Welcome" title
- Start position (X and Y coordinates)

The utility is not just great for Terminal Services environments, its perfect for any type client environment as well!

And of course this is the perfect utility to use as a compliment to the [Flex Profile Kit](#) and the [Flex EnvokeIT Logger](#)!



Contents

Introduction	2
1. Technical information	4
1.1. Installation.....	4
1.2. Standard Edition	4
1.2.1. <i>Standard Edition Sample Script</i>	4
1.3. Advanced Edition	5
1.3.1. <i>CompanyLogo property</i>	5
1.3.2. <i>FormColor property</i>	6
1.3.3. <i>PictureBoxColor property</i>	6
1.3.4. <i>X_Start_Position property (optional)</i>	7
1.3.5. <i>Y_Start_Position property (optional)</i>	7
1.4. Example logon script	7
1.5. Utility requirements.....	8



1. Technical information

The ScriptWindow utility is a .NET assembly that exposes its properties and methods through COM object instantiation.

1.1. Installation

To install the utility you run its MSI installation and follow the step by step guide. Then update your script to use the utility and add your own logo, background color and messages that is shown upon execution.

1.2. Standard Edition

The standard edition of the ScriptWindow allows you to show you own messages and progress in the ScriptWindow; you will however not be able to change the Company logo or any background colors.

1.2.1. Standard Edition Sample Script

[Option Explicit](#)
[On Error Resume Next](#)

```
Dim objWShell  
Dim objScriptWindow
```

```
Err.Clear  
Set objScriptWindow = WScript.CreateObject("EnvokeIT_ScriptWindow_Standard_Edition.ScriptWindow")  
If Err.number = 0 Then  
    Err.Clear  
    Set objWShell = WScript.CreateObject("WScript.Shell")  
    If Err.Number = 0 Then  
        Dim varReturn  
        Err.Clear  
        'show the form!  
        varReturn = objScriptWindow.ShowForm()  
        If varReturn = 0 Then  
            'add a line that is shown in the form...  
            objScriptWindow.AddLine "CPS Logon started!"  
            Wscript.Sleep 1000  
  
            objScriptWindow.AddLine vbNewLine & "Mapping Group Drive (G:):..."  
            Wscript.Sleep 1000  
            objScriptWindow.AddLine "done!"  
            Wscript.Sleep 1000  
  
            objScriptWindow.AddLine vbNewLine & "Mapping Program Drive (P:):..."  
            Wscript.Sleep 1000  
            objScriptWindow.AddLine "done!"  
            Wscript.Sleep 1000  
  
            objScriptWindow.AddLine vbNewLine & "Mapping Temp Drive (T:):..."  
            Wscript.Sleep 1000  
            objScriptWindow.AddLine "done!"  
  
            objScriptWindow.AddLine vbNewLine & "Restoring Office settings..."  
            Wscript.Sleep 1000  
            objScriptWindow.AddLine "done!"
```

ENVOKEIT

```
objScriptWindow.AddLine vbNewLine & "Restoring Adobe settings..."
Wscript.Sleep 1000
objScriptWindow.AddLine "done!"

objScriptWindow.AddLine vbNewLine & "Restoring Windows and IE settings..."
Wscript.Sleep 1000
objScriptWindow.AddLine "done!"

objScriptWindow.AddLine vbNewLine & "Restoring Oracle settings..."
Wscript.Sleep 1000
objScriptWindow.AddLine "done!"

varReturn = objScriptWindow.CloseForm()

Set objScriptWindow = Nothing
Set objWSHShell = Nothing
Else
    WScript.Echo "An error was raised when trying to show the Form, exiting!"
End If
Else
    WScript.Echo "Error raised when trying to instantiate the Wscript.Shell object, error message raised; "
    & Err.Description & ". Exiting!"
End If
Else
    WScript.Echo "Error raised, couldn't instantiate the ScriptWindow.ScriptWindow class, verify that the DDL is
    registered ok under HKCR, exiting!"
End If
```

1.3. Advanced Edition

The Advanced edition can as already mentioned be configured to use another Company log, background color of the picture box and also the background color of the whole form which is gray in the Standard Edition.

To do this simply install the Advanced Edition and point out the *.lic license file provided by EnvokEIT in the *vbscript*, and then edit the script with the properties you want to set.

See the example script provided in the installation directory for more information.

1.3.1. CompanyLogo property

The CompanyLogo property can be set to a path to your company logo file. For example;

```
objScriptWindow.CompanyLogo = "c:\Companyx.jpg"
```

This line will set use the Companyx.jpg files' logo.

Tip; use a logo that is transparent and then set the background to white, or use the same background color for the picture box as the logos' background color.

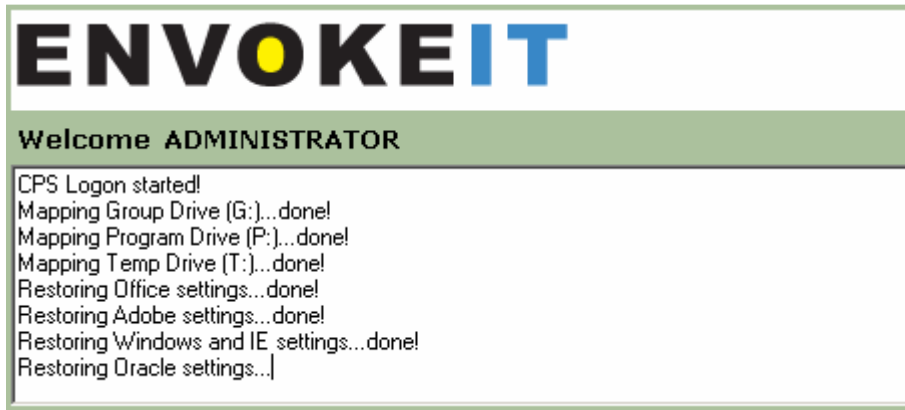
ENVOKEIT

1.3.2. FormColor property

This property sets the color that the ScriptWindow for will use, default it uses a gray color. It is set by using a hexadecimal color value as shown by the example below;

```
objScriptWindow.FormColor = "#ABC19D"
```

This will set the color as shown below;

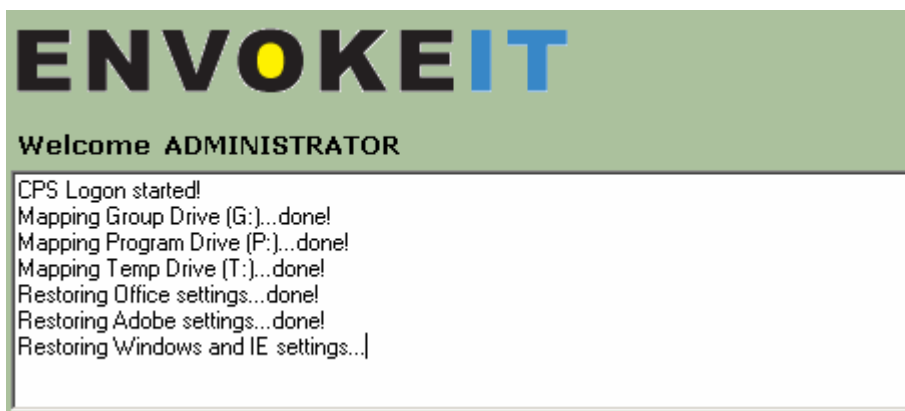


1.3.3. PictureBoxColor property

This property sets the background color of the picture box that holds the company logo. It's recommended to set this to the same color as the background color of your company logo or use white background color if the logo is transparent.

Here is an example of setting the background color to the same as the *FormColor*;

```
objScriptWindow.PictureBoxColor = "#ABC19D"
```



As you can see in the example above both the *FormColor* and the *PictureBoxColor* properties have been set to the same color.

ENVOKEIT

1.3.4. X_Start_Position property (optional)

This property specifies the X coordinate at where to show the ScriptWindow form. This property is optional. If not set the form will be shown on top of all others in the center of the screen.

1.3.5. Y_Start_Position property (optional)

This property specifies the Y coordinate at where to show the ScriptWindow form. This property is optional. If not set the form will be shown on top of all others in the center of the screen.

1.4. Example logon script

Option Explicit
On Error Resume Next

```
Dim objWShell  
Dim objScriptWindow  
Dim objFSO  
Dim strPathToLicenseFile
```

```
Set objFSO = Wscript.CreateObject("Scripting.FileSystemObject")
```

```
'Change this path to reflect the path to where you have your license file stored, it might be a good idea to have it locally on  
the computer you run the  
'ScriptWindow on to improve performance though the tool doesn't have to read the license file over the network from a file  
share.  
'Remember to put Chr(34) around long paths with spaces in them!
```

```
'In the example line below the ScriptWindow.lic file is in the same folder as the example vbscript  
strPathToLicenseFile = "ScriptWindow.lic"
```

```
Err.Clear  
Set objScriptWindow = WScript.CreateObject("EnvokeIT_ScriptWindow_Advanced_Edition.ScriptWindow")  
If Err.number = 0 Then  
    Err.Clear  
    Set objWShell = WScript.CreateObject("WScript.Shell")  
    If Err.Number = 0 Then  
        If objFSO.FileExists(strPathToLicenseFile) Then  
            'set path to license file  
            objScriptWindow.PathToLicenseFile = strPathToLicenseFile  
  
            'set the x start position  
            objScriptWindow.X_Start_Position = 100  
  
            'set the y start position  
            objScriptWindow.Y_Start_Position = 100  
  
            'set path to the Logo you want to use  
            objScriptWindow.CompanyLogo = "c:\EnvokeIT.jpg"  
  
            'Set the Title text you want to show your user  
            objScriptWindow.Title = "Welcome " &  
            UCase(objWShell.ExpandEnvironmentStrings("%USERNAME%"))  
  
            'set the FormColor you want to use  
            objScriptWindow.FormColor = "#ABC19D"  
  
            'Set the backgroudn color of the picturebox
```

ENVOKEIT

```
objScriptWindow.PictureBoxColor = "#FFFFFF"

Dim varReturn
Err.Clear
'show the form!
varReturn = objScriptWindow.ShowForm()
If varReturn = 0 Then
    'add a line that is shown in the form...
    objScriptWindow.AddLine "CPS Logon started!"
    Wscript.Sleep 1000

    objScriptWindow.AddLine vbNewLine & "Mapping Group Drive (G:)..."
    Wscript.Sleep 1000
    objScriptWindow.AddLine "done!"
    Wscript.Sleep 1000

    objScriptWindow.AddLine vbNewLine & "Mapping Program Drive (P:)"
    Wscript.Sleep 1000
    objScriptWindow.AddLine "done!"
    Wscript.Sleep 1000

    objScriptWindow.AddLine vbNewLine & "Mapping Temp Drive (T:)"
    Wscript.Sleep 1000
    objScriptWindow.AddLine "done!"

    objScriptWindow.AddLine vbNewLine & "Restoring Office settings..."
    Wscript.Sleep 1000
    objScriptWindow.AddLine "done!"

    objScriptWindow.AddLine vbNewLine & "Restoring Adobe settings..."
    Wscript.Sleep 1000
    objScriptWindow.AddLine "done!"

    objScriptWindow.AddLine vbNewLine & "Restoring Windows and IE settings..."
    Wscript.Sleep 1000
    objScriptWindow.AddLine "done!"

    objScriptWindow.AddLine vbNewLine & "Restoring Oracle settings..."
    Wscript.Sleep 1000
    objScriptWindow.AddLine "done!"

    varReturn = objScriptWindow.CloseForm()

    Set objScriptWindow = Nothing
    Set objWShell = Nothing
Else
    WScript.Echo "An error was raised when trying to show the Form, exiting!"
End If
Else
    WScript.Echo "Error raised, couldn't find the license file specified in the script, this is the
path set; " & strPathToLicenseFile & ". Exiting!"
End If
Else
    WScript.Echo "Error raised when trying to instantiate the Wscript.Shell object, error message raised; "
& Err.Description & ". Exiting!"
End If
Else
    WScript.Echo "Error raised, couldn't instantiate the ScriptWindow.ScriptWindow class, verify that the DDL is
registered ok under HKCR, exiting!"
End If
```

1.5. Utility requirements

The utility requires .NET Framework 1.1 on the computer it is installed on.